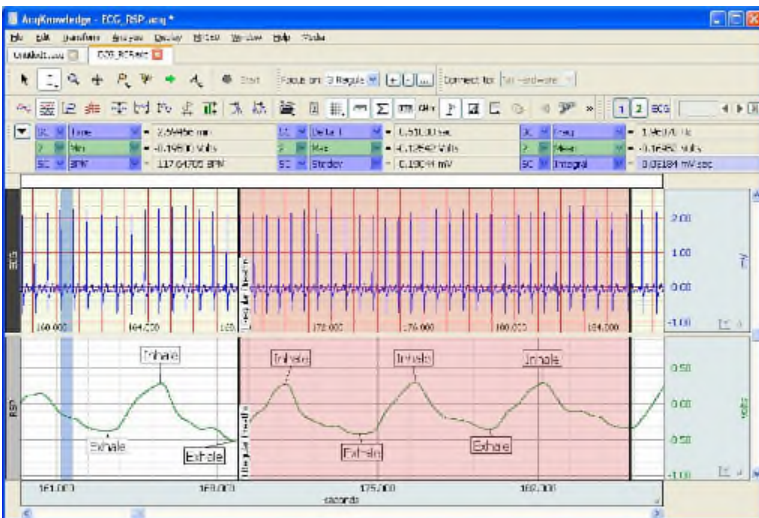


The Fastest, Easiest Way to Better Data

MP160 – 16 Channel data acquisition & analysis system

MP160 with AcqKnowledge 5 is the newest addition to the MP Research System line, and is functionally equivalent to the MP150 device it replaces. The MP160 and AcqKnowledge 5 combination provides a powerful tool for life science research and features enhancements including improved signal quality, an auto-sensing Ethernet port, lower power consumption, an eco-friendly design, and more. The MP160 unit ships with a HLT100C High Level Transducer module.



AcqKnowledge 5 contains many new features, including: consolidated hardware support for MP160, MP150, M36R, and BioHarness, compatibility with Windows® 10, linked acquisitions, focus areas, data integration, animal ECG boundary detection, and pressure-volume loop analysis.

The BIOPAC **MP160 system** is a flexible, proven modular data acquisition & analysis system for life science research. This 16-channel system includes *AcqKnowledge* software with specialized analysis capabilities. Applicable to over 40 research fields, new modules are available for electrogastrogram, micro-electrode recording, noninvasive blood pressure measurement & electrical bioimpedance (cardiac output), and others. To facilitate the discovery process and help ensure reproducible, publishable data, powerful automated analysis routines are available for ECG, HRV, EEG, EMG, EGG, and many more.

AcqKnowledge 5 New Features:

- Next generation of *AcqKnowledge*
- 64-bit architecture
- Improved performance – accesses more memory
- No CD – installation software provided on USB license dongle